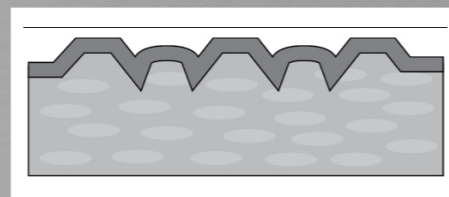
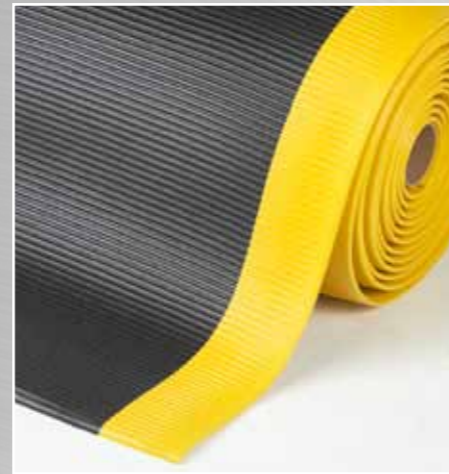


406 Crossrib Sof-Tred™



- Side-to-side wide ribs provide traction and is easy to sweep clean.
- Exceptional worker comfort due to 12,7 mm thick newly formulated compound.
- Protective layer of exclusive Dyna-Shield™ extends service life by 50% compared to regular microcellular vinyl.
- Fire rating Class 2 according NFPA Safety Code 101.
- Available yellow borders along sides comply with OSHA code 1910-144.
- All 4 sides are bevelled and sealed to minimize tripping hazards.
- Free of toxic DOP and DMF.

406 Crossrib Sof-Tred™

PRODUCT SPECIFICATIONS		
Designation	Industrial matting	
Type	Anti-fatigue	
Description	Side-to-side wide ribs surface, with protective layer of Dyna-Shield™	
Material	Microcellular vinyl	
Process	Foaming	
Category	Better	
Recommended use	Medium duty – dry areas	
Colours	Black/Yellow, Grey	
Weight	4 kg/m ²	
Thickness	12,7 mm	
Standard sizes	60 cm x 91 cm 91 cm x 150 cm 60 cm x 18.3 m 91 cm x 18.3 m 122 cm x 18.3 m	
Custom sizes	60 cm, 91 cm and 122 cm per linear meter	
Special remarks	With Dyna-Shield™, a tough barrier which is 50% more resistant to wear. Ribs are running width-wise.	
PRODUCT TESTING		
Tests	Norms	Results
Compression deflection	U.S.	
	1.4 Kg/cm ²	0,71 cm
	2.8 Kg/cm ²	0,84 cm
Foam battery	ASTM D3574	
Abrasion resistance	ASTM D3884-01	
	500 Cycles	1,7% weight loss
	1000 Cycles	2,02% weight loss
Static coefficient of friction	ASTM C1028-96	1,10
Elongation	ASTM D412	144%
Breaking load	ASTM D412	22,1 lb
Graves tear strength	ASTM D 1004	10,5 lb
Hardness	ASTM D2240-02	25 Shore A
Anti-slip	DIN 51130 and BG-RULE BGR181	
FIRE TESTING		
	Critical radiant flux	ASTM E-648
		0.32 watts/cm ²
	Fire retardancy	DIN4102 EN 13501-1
	Flammability test	ASTM D2859
		Pass
ESD	ANSI ESD S7.1 50% Humidity	
Sustainability	<ul style="list-style-type: none"> • Recyclable material • Reach Compliant (Registration, Evaluation, Authorization and Restriction of Chemicals) 	

zu beziehen bei:
<https://matten-zuschnitt.de>
 mail: info@matten-zuschnitt.de
 Tel.: 06359/9611906